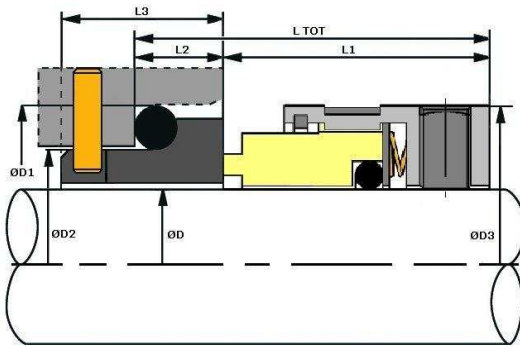
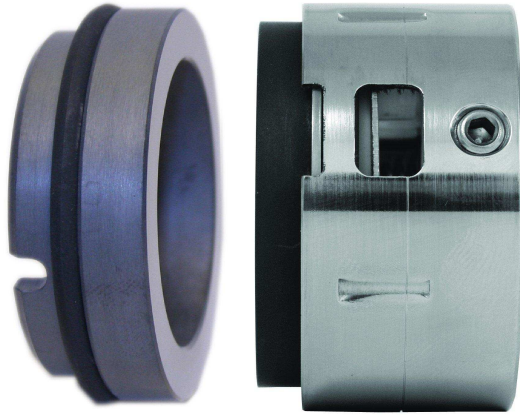




Type 1659SL



VULCAN STANDARD SIZES

Metric Size D	Size Code	D1	D2	D3	L1	L2	L3	L Tot.	SLOT WIDTH	SLOT DEPTH
16	0160	27.00	22.40	26.00	23.00	8.60	15.00	31.60	4.00	5.00
18	0180	33.00	26.60	32.20	24.00	10.00	17.00	34.00	5.00	5.50
20	0200	35.00	28.60	34.20	24.00	10.00	17.00	34.00	5.00	5.50
22	0220	37.00	30.60	36.50	24.00	10.00	17.00	34.00	5.00	5.50
24	0240	39.00	32.60	38.60	26.70	10.00	17.00	36.70	5.00	5.50
25	0250	40.00	33.60	40.00	27.00	10.00	17.00	37.00	5.00	5.50
28	0280	43.00	36.60	43.00	30.00	10.00	17.00	40.00	5.00	5.50
30	0300	45.00	38.60	45.00	30.50	10.00	17.00	40.50	5.00	5.50
32	0320	48.00	41.60	47.10	30.50	10.00	17.00	40.50	5.00	5.50
33	0330	48.00	41.60	48.20	30.50	10.00	17.00	40.50	5.00	5.50
35	0350	50.00	43.80	50.00	30.50	10.00	17.00	40.50	5.00	5.50
38	0380	56.00	48.80	54.00	32.00	11.00	18.00	43.00	5.00	5.50
40	0400	58.00	50.80	56.00	32.00	11.00	18.00	43.00	5.00	5.50
43	0430	61.00	53.80	59.00	32.00	11.00	18.00	43.00	5.00	5.50
45	0450	63.00	55.80	61.00	32.00	11.00	18.00	43.00	5.00	5.50
48	0480	66.00	58.80	64.00	32.00	11.00	18.00	43.00	5.00	5.50
50	0500	70.00	61.30	66.30	34.00	13.00	20.00	47.00	5.00	5.50
53	0530	73.00	64.30	68.70	34.00	13.00	20.00	47.00	5.00	5.50
55	0550	75.00	66.30	70.80	34.00	13.00	20.00	47.00	5.00	5.50
58	0580	78.00	69.30	78.00	39.00	13.00	20.00	52.00	5.00	5.50
60	0600	80.00	71.30	79.80	39.00	13.00	20.00	52.00	5.00	5.50
63	0630	83.00	74.30	82.80	39.00	13.00	20.00	52.00	5.00	5.50
65	0650	85.00	76.30	85.50	39.00	13.00	20.00	52.50	5.00	5.50
68	0680	90.00	80.50	87.80	39.00	15.30	22.00	52.50	5.00	5.50
70	0700	92.00	82.60	90.00	45.50	15.30	22.00	60.00	5.00	5.50
75	0750	97.00	87.60	95.20	45.50	15.30	22.00	60.00	5.00	5.50
80	0800	105.00	94.70	103.80	45.00	15.70	23.00	60.00	5.00	5.50
85	0850	110.00	99.70	109.10	45.00	15.70	23.00	60.00	5.00	5.50
90	0900	115.00	104.70	113.80	50.00	15.70	23.00	65.00	5.00	5.50
95	0950	120.00	109.70	118.50	50.00	15.70	23.00	65.00	5.00	5.50
100	1000	125.00	114.70	123.50	50.00	15.70	23.00	65.00	5.00	5.50

Metric shaft size, multiple spring, unbalanced 'O'-ring mounted rotary with long style 'O'-ring mounted seat, with anti-rotation provision, to EN12756 DIN 24960 DIN housing sizes.

Suitable for medium and heavy pump duties.

STANDARD FACE MATERIALS

Rotary Face: M825 Carbon, RB Silicon Carbide, Q1 Silicon Carbide, Tungsten Carbide.

Seat Ring: Ceramic, RB Silicon Carbide, Q1 Silicon Carbide, Tungsten Carbide.

Suggested Operating Limits

Pressure 200psi Speed 25m/s
Temperature -100 to +200°C

Limits are dependant upon shaft size, shaft speed, temperature, and media to be sealed.