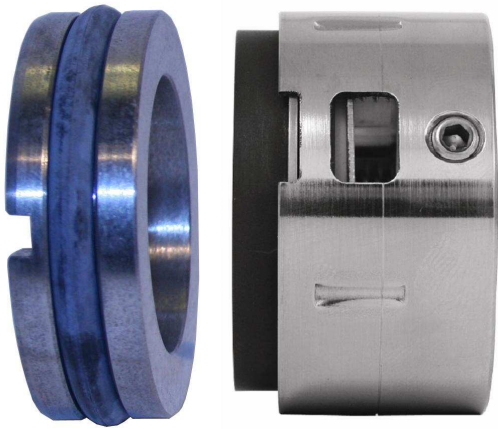
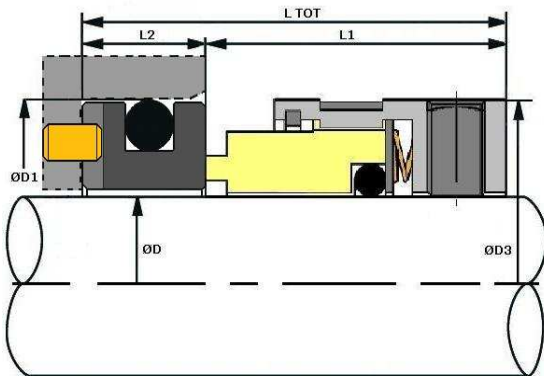




Type 1645SJ



VULCAN STANDARD SIZES



| Imperial Size D | Size Code | D1 | D3 | L1 | L2 | L TOT |
|-----------------|-----------|--------|--------|-------|-------|-------|
| 1/2" | 0127 | 25.40 | 23.80 | 23.80 | 7.95 | 31.75 |
| 5/8" | 0158 | 31.75 | 27.00 | 23.80 | 10.28 | 34.08 |
| 3/4" | 0191 | 34.93 | 30.20 | 23.80 | 10.28 | 34.08 |
| 7/8" | 0222 | 38.10 | 33.40 | 23.80 | 10.28 | 34.08 |
| 1.0" | 0254 | 41.28 | 36.50 | 25.40 | 11.10 | 36.50 |
| 1.1/8" | 0286 | 44.45 | 39.70 | 25.40 | 11.10 | 36.50 |
| 1.1/4" | 0317 | 47.63 | 42.90 | 25.40 | 11.10 | 36.50 |
| 1.3/8" | 0349 | 50.80 | 49.30 | 34.90 | 11.10 | 46.00 |
| 1.1/2" | 0381 | 53.98 | 49.30 | 28.60 | 11.10 | 39.70 |
| 1.5/8" | 0412 | 60.33 | 57.20 | 29.40 | 12.70 | 42.10 |
| 1.3/4" | 0444 | 63.50 | 58.80 | 34.90 | 12.70 | 47.60 |
| 1.7/8" | 0476 | 66.68 | 63.50 | 34.90 | 12.70 | 47.60 |
| 2.0" | 0508 | 69.85 | 66.70 | 34.90 | 12.70 | 47.60 |
| 2.1/8" | 0539 | 76.20 | 71.50 | 42.80 | 14.30 | 57.10 |
| 2.1/4" | 0571 | 79.38 | 72.30 | 34.90 | 14.30 | 49.20 |
| 2.3/8" | 0603 | 82.55 | 76.20 | 42.80 | 14.30 | 57.10 |
| 2.1/2" | 0635 | 85.73 | 79.40 | 34.90 | 14.30 | 49.20 |
| 2.5/8" | 0666 | 85.73 | 82.60 | 42.80 | 15.90 | 58.70 |
| 2.3/4" | 0698 | 88.90 | 85.70 | 42.80 | 15.90 | 58.70 |
| 2.7/8" | 0730 | 95.25 | 88.90 | 42.80 | 15.90 | 58.70 |
| 3.0" | 0762 | 98.43 | 92.10 | 42.80 | 15.90 | 58.70 |
| 3.1/8" | 0794 | 101.60 | 95.30 | 42.80 | 19.88 | 62.68 |
| 3.1/4" | 0825 | 104.78 | 98.40 | 42.80 | 19.88 | 62.68 |
| 3.3/8" | 0857 | 107.95 | 101.60 | 42.80 | 19.88 | 62.68 |
| 3.1/2" | 0889 | 111.13 | 104.80 | 42.80 | 19.88 | 62.68 |
| 3.5/8" | 0920 | 114.30 | 108.00 | 42.80 | 19.88 | 62.68 |
| 3.3/4" | 0953 | 117.48 | 111.10 | 42.80 | 19.88 | 62.68 |
| 3.7/8" | 0984 | 120.65 | 114.30 | 42.80 | 19.88 | 62.68 |
| 4.0" | 1016 | 123.83 | 117.50 | 42.80 | 19.88 | 62.68 |

Imperial shaft size, multiple spring, un-balanced 'O'-ring mounted rotary with 'O'-ring mounted seat, with axial anti-rotation pin provision.
Especially suited for medium and heavy pump duties where the media allows use of standard elastomeric compounds.

STANDARD FACE MATERIALS
Rotary Face: M825 Carbon, RB Silicon Carbide.
Seat Ring: Q1 Silicon Carbide, Q2 Silicon Carbide, Tungsten Carbide.

Suggested Operating Limits
Pressure 240psi Speed 25m/s
Temperature -100 to +200°C
Limits are dependant upon shaft size, shaft speed, temperature, and media to be sealed.