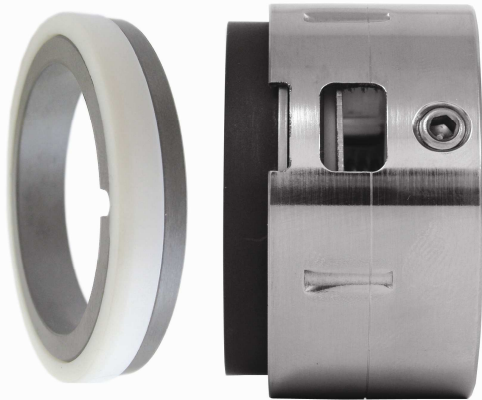
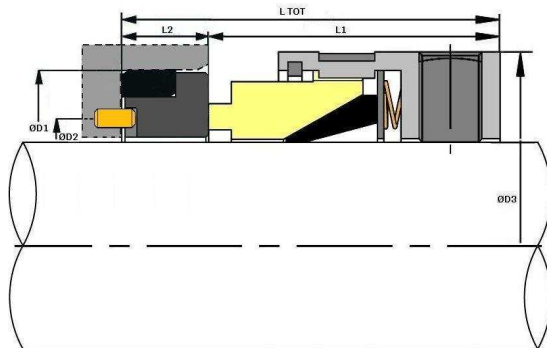




# Type 1645A



## VULCAN STANDARD SIZES



Imperial shaft size, multiple spring, un-balanced PTFE mounted rotary with PTFE -boot mounted seat, with axial anti-rotation pin provision.  
Especially suited for medium and heavy pump duties where the media prevents use of any elastomeric components.

**STANDARD FACE MATERIALS**  
Rotary Face: M825 Carbon, RB Silicon Carbide.

Seat Ring: Q1 Silicon Carbide, Q2 Silicon Carbide, Tungsten Carbide.

### Suggested Operating Limits

Pressure 240psi                      Speed 25m/s  
Temperature -100 to +200°C  
Limits are dependant upon shaft size, shaft speed, temperature, and media to be sealed.

| Imperial Size D | Size Code | D1     | D2 PIN PCD | D3     | L1    | L2    | L TOT |
|-----------------|-----------|--------|------------|--------|-------|-------|-------|
| 1/2"            | 0127      | 25.40  | 17.46      | 23.80  | 23.80 | 7.95  | 31.75 |
| 5/8"            | 0158      | 31.75  | 20.64      | 27.00  | 23.80 | 10.30 | 34.10 |
| 3/4"            | 0191      | 34.93  | 23.81      | 30.20  | 23.80 | 10.30 | 34.10 |
| 7/8"            | 0222      | 38.10  | 26.99      | 33.40  | 23.80 | 10.30 | 34.10 |
| 1.0"            | 0254      | 41.28  | 30.15      | 36.50  | 25.40 | 11.10 | 36.50 |
| 1.1/8"          | 0286      | 44.45  | 33.35      | 39.70  | 25.40 | 11.10 | 36.50 |
| 1.1/4"          | 0317      | 47.63  | 36.50      | 42.90  | 25.40 | 11.10 | 36.50 |
| 1.3/8"          | 0349      | 50.80  | 39.70      | 49.30  | 34.90 | 11.10 | 46.00 |
| 1.1/2"          | 0381      | 53.98  | 42.85      | 49.30  | 28.60 | 11.10 | 39.70 |
| 1.5/8"          | 0412      | 60.33  | 47.65      | 57.20  | 29.40 | 12.70 | 42.10 |
| 1.3/4"          | 0444      | 63.50  | 50.80      | 58.80  | 34.90 | 12.70 | 47.60 |
| 1.7/8"          | 0476      | 66.68  | 53.90      | 63.50  | 34.90 | 12.70 | 47.60 |
| 2.0"            | 0508      | 69.85  | 57.15      | 66.70  | 34.90 | 12.70 | 47.60 |
| 2.1/8"          | 0539      | 76.20  | 60.30      | 71.50  | 42.80 | 14.30 | 57.10 |
| 2.1/4"          | 0571      | 79.38  | 63.50      | 72.30  | 34.90 | 14.30 | 49.20 |
| 2.3/8"          | 0603      | 82.55  | 66.70      | 76.20  | 42.80 | 14.30 | 57.10 |
| 2.1/2"          | 0635      | 85.73  | 69.85      | 79.40  | 34.90 | 14.30 | 49.20 |
| 2.5/8"          | 0666      | 85.73  | 73.00      | 82.60  | 42.80 | 15.90 | 58.70 |
| 2.3/4"          | 0698      | 88.90  | 76.20      | 85.70  | 42.80 | 15.90 | 58.70 |
| 2.7/8"          | 0730      | 95.25  | 79.35      | 88.90  | 42.80 | 15.90 | 58.70 |
| 3.0"            | 0762      | 98.43  | 82.55      | 92.10  | 42.80 | 15.90 | 58.70 |
| 3.1/8"          | 0794      | 101.60 | 85.75      | 95.30  | 42.80 | 19.80 | 62.60 |
| 3.1/4"          | 0825      | 104.78 | 88.90      | 98.40  | 42.80 | 19.80 | 62.60 |
| 3.3/8"          | 0857      | 107.95 | 92.05      | 101.60 | 42.80 | 19.80 | 62.60 |
| 3.1/2"          | 0889      | 111.13 | 95.25      | 104.80 | 42.80 | 19.80 | 62.60 |
| 3.5/8"          | 0920      | 114.30 | 98.40      | 108.00 | 42.80 | 19.80 | 62.60 |
| 3.3/4"          | 0953      | 117.48 | 101.60     | 111.10 | 42.80 | 19.80 | 62.60 |
| 3.7/8"          | 0984      | 120.65 | 104.80     | 114.30 | 42.80 | 19.80 | 62.60 |
| 4.0"            | 1016      | 123.83 | 107.95     | 117.50 | 42.80 | 19.80 | 62.60 |